

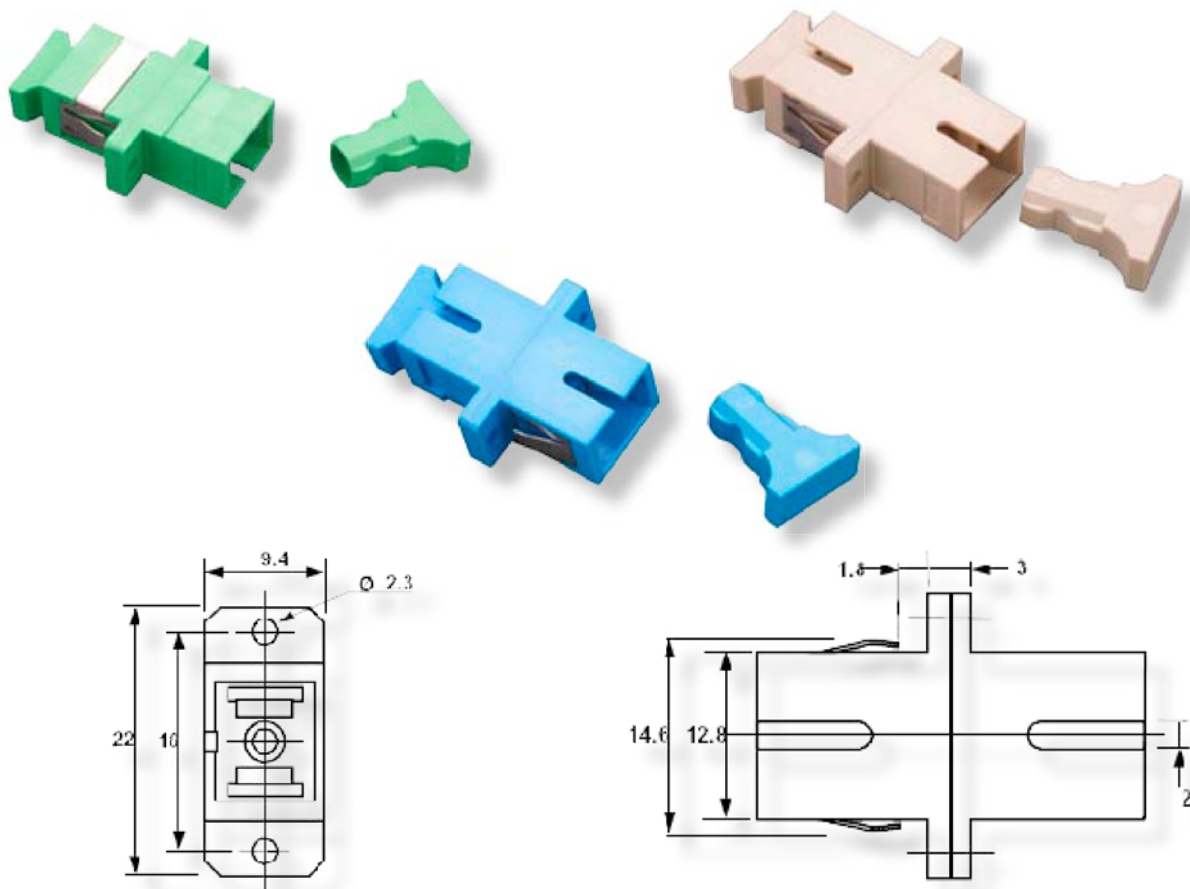
# SC Adapter

## SC Adapter

# OPTRONICS

An optical fibre adapter or uniter is used to mate two connectors together, usually mounted in a distribution panel or wall box. In most cases it is the critical part of the system that aligns the ferrule part of the connectors keeping the fibres in perfect alignment.

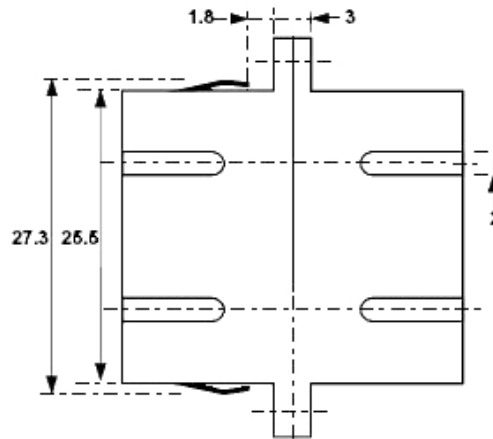
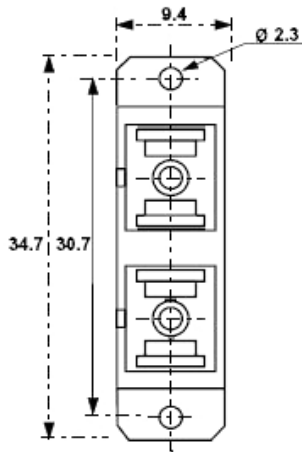
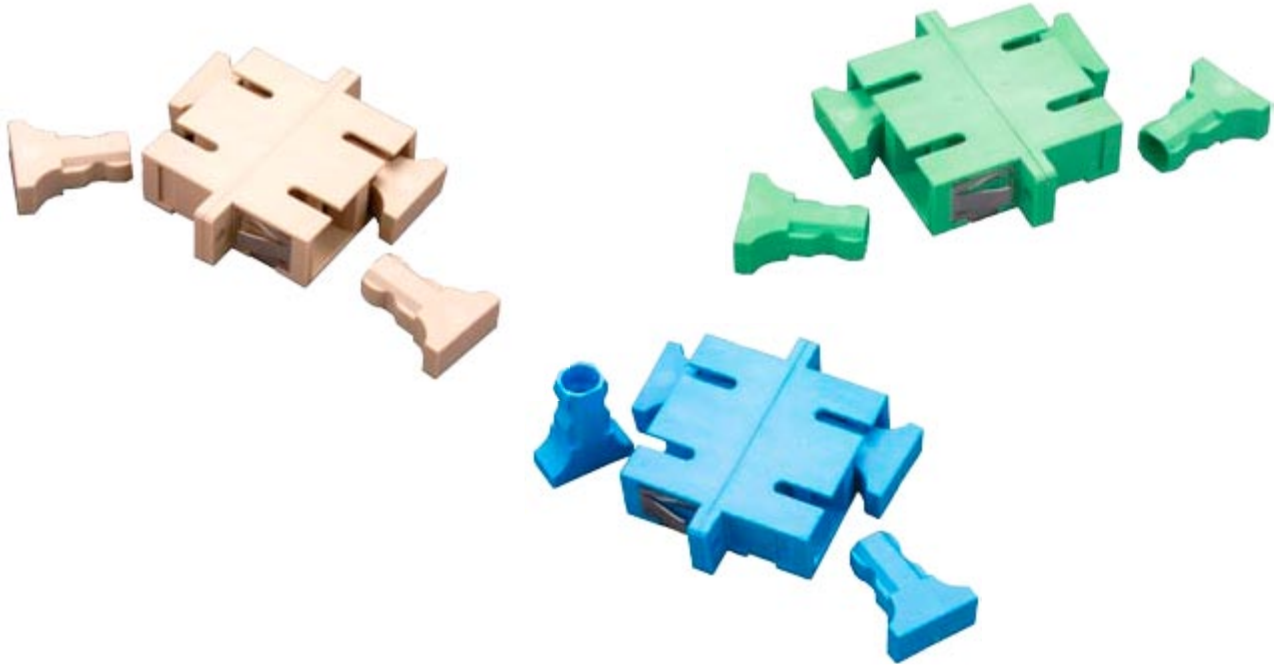
Generally there are two types of alignment sleeve within an adapter, phosphor bronze for multi-mode or zirconia (ceramic) for single mode.



The SC has connector and adapter are the most used set for modern day optical fibre systems. With the audible click locking mechanism and pull proof design this connector provides a secure interconnect.

# SC Adapter

## Specifications



## Ordering Information

SC multimode  
Beige adapter  
Simplex  
SCUSPHRBEIGE      Duplex  
SCUDPHRBEIGE

SC singlemode  
Blue adapter  
Simplex      Duplex  
SCUSZR02      SCUDZR02

SC singlemode APC  
Green adapter  
Simplex      Duplex  
SCAPCUCGREEN      SCAPCUDGREEN